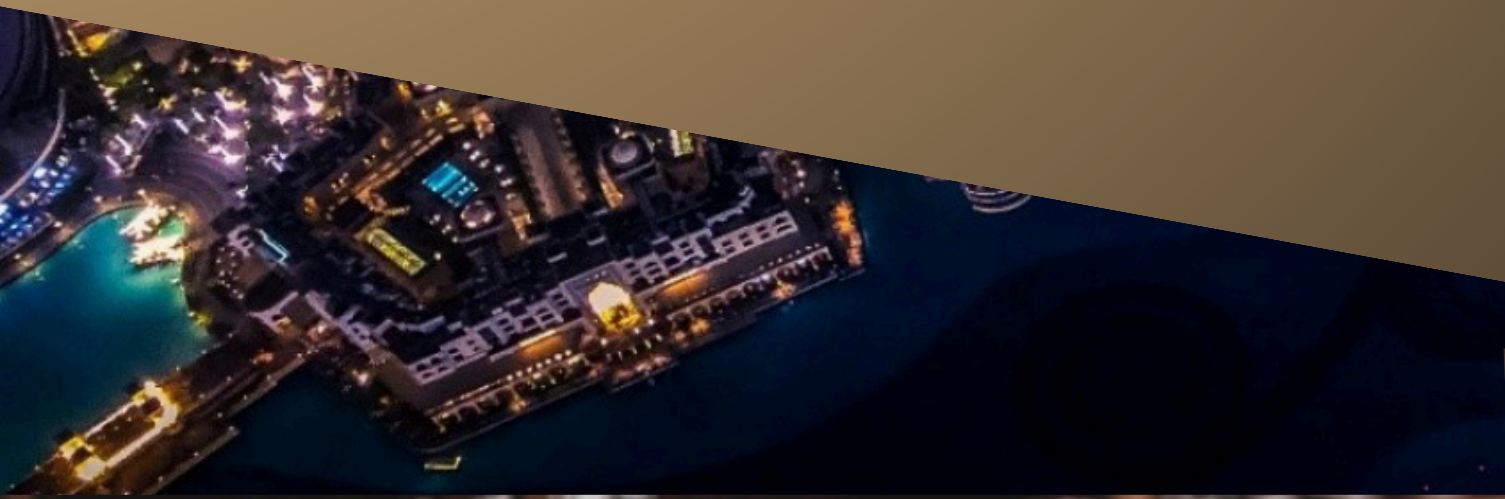




# EKYINE

Unmatched Equipment  
Advanced Tools  
Quality Materials



At **EKYINE TRADING LTD**, we pride ourselves on being a leading trading company dedicated to meeting the diverse needs of our clients. Our mission is to deliver superior procurement services prioritizing quality, competitive pricing, timely delivery, and unmatched customer satisfaction while fostering a culture of excellence and accountability.

With our extensive range of offerings, we are equipped to support industries of all kinds.

## **OUR OFFERINGS:**

### **Large Scale Procurement:**

EKYINE supplies a comprehensive range of materials specifically tailored for large scale undertakings such as real estate, industrial and infrastructural projects. From foundational materials to finishing touches, we provide everything needed to construct high-quality residential, commercial and public properties. Our products are chosen for their durability, sustainability, and regulatory superiority.

### **Home and Office Construction and Maintenance:**

Whether you are building a new home or office, or maintaining an existing one, EKYINE provides a wide variety of high-quality materials. From basic construction supplies to advanced maintenance tools, we ensure your projects are completed with excellence.

### **Specialized Industrial Tools and Materials:**

Our selection of specialized tools and materials is designed to meet the unique demands of various industries. We cater to everything from basic manufacturing to heavy industry, providing the precision tools and durable materials necessary for any job.

### **Product Sourcing:**

Efficiency and convenience are at the core of our services. Our team is adept at sourcing products based on your specific requirements, ensuring that you get exactly what you need. Whether it's a rare tool or a large quantity of materials, we handle the sourcing so you can focus on your project.

### **Logistics and Supply Chain Management:**

We understand that timely delivery is crucial for large-scale projects. EKYINE offers comprehensive logistics and supply chain management services. From procurement to delivery, we ensure that your products are transported safely and efficiently, minimizing delays and optimizing your project timeline.

### **Project Consultation and Planning:**

EKYINE provides expert consultation services to assist clients in planning and executing their projects effectively. Our on-site engineers and consultants offer strategic advice and hands-on supervision tailored to the specific needs of the results you envision, ensuring that your project objectives are met efficiently and within budget.

## OUR VALUES

At EKYINE, we adhere unwaveringly to our core values, ensuring they resonate through every facet of our operations and interactions. These principles define who we are and guide us in our pursuit of excellence.

- **Client Satisfaction:** Client satisfaction lies at the heart of our mission. We go above and beyond to not only meet but exceed expectations, offering personalized solutions and unparalleled service that anticipate and address the unique needs of each client.
- **Integrity:** Integrity forms the bedrock of our business. We uphold the highest ethical standards in all our dealings, fostering trust and transparency with our clients, partners, and within our team. We believe in doing the right thing, always.
- **Reliability:** Dependability is our promise. We stand by our commitments and deliver consistently, ensuring peace of mind for our clients. Our reliability is built on a foundation of accountability and a relentless pursuit of excellence.
- **Lasting Relationships:** Building enduring relationships is more than a goal; it's a commitment. We forge connections based on mutual respect, open communication, and a dedication to understanding and meeting the evolving needs of our clients over time.
- **Productivity:** Innovation is our driving force. We thrive on pushing boundaries and exploring new ideas to stay ahead in a dynamic marketplace. Our focus on productivity means we continuously seek smarter, more efficient ways to deliver value and anticipate future challenges.
- **Commitment to Excellence:** Excellence is not just an aspiration but a standard embedded in everything we do. From our strategic planning to our day-to-day operations, we strive for continuous improvement, setting benchmarks and raising the bar in our industry.
- **Growth Mindset:** Adopting a mindset of continuous learning and improvement, we embrace challenges as opportunities for development and innovation, ensuring we remain at the forefront of our industry.
- **Teamwork:** Collaborating effectively with clients and partners, we leverage our collective strengths to achieve shared goals and drive mutual success.

As we continue to grow and evolve, these values remain our compass, guiding us through every decision and opportunity. We are dedicated to maintaining a culture where integrity, innovation, and client success thrive, ensuring EKYINE remains a trusted partner and industry leader.

## **UNMATCHED EQUIPMENT | ADVANCED TOOLS | QUALITY MATERIALS**

Our commitment to excellence is not just a statement but a philosophy ingrained in everything we do. Our slogan, Unmatched Equipment | Advanced Tools | Quality Materials, encapsulates our dedication to delivering the highest standards of performance and reliability to our clients.

### **Unmatched Equipment**

We offer an extensive range of equipment that sets the benchmark for excellence. Whether you require construction machinery, industrial equipment, or specialized tools, EKYINE ensures access to the best-in-class solutions. Through strategic partnerships with leading manufacturers, we guarantee products that are not only durable and efficient but also technologically advanced. Our commitment to quality ensures that every piece of equipment we supply meets stringent performance criteria, empowering our clients to achieve their operational goals with confidence.

### **Advanced Tools**

Innovation drives our selection of tools across diverse industries. From cutting-edge power tools to specialized instruments designed for precision work, EKYINE delivers solutions that enhance productivity and accuracy. Our comprehensive range of advanced tools is curated to meet the evolving demands of modern businesses, ensuring that professionals have access to the tools they need to excel in their respective fields.

### **Quality Materials**

Quality is the cornerstone of our materials supply. EKYINE sources and provides materials that adhere to uncompromising quality standards, guaranteeing longevity and performance in every application. Our inventory includes top-grade construction materials, industrial supplies, and maintenance products meticulously chosen for their reliability and durability. With EKYINE, you can rest assured that your projects are fortified with materials that meet the highest industry benchmarks, setting the foundation for lasting success.

### **Adherence to Client Specifications**

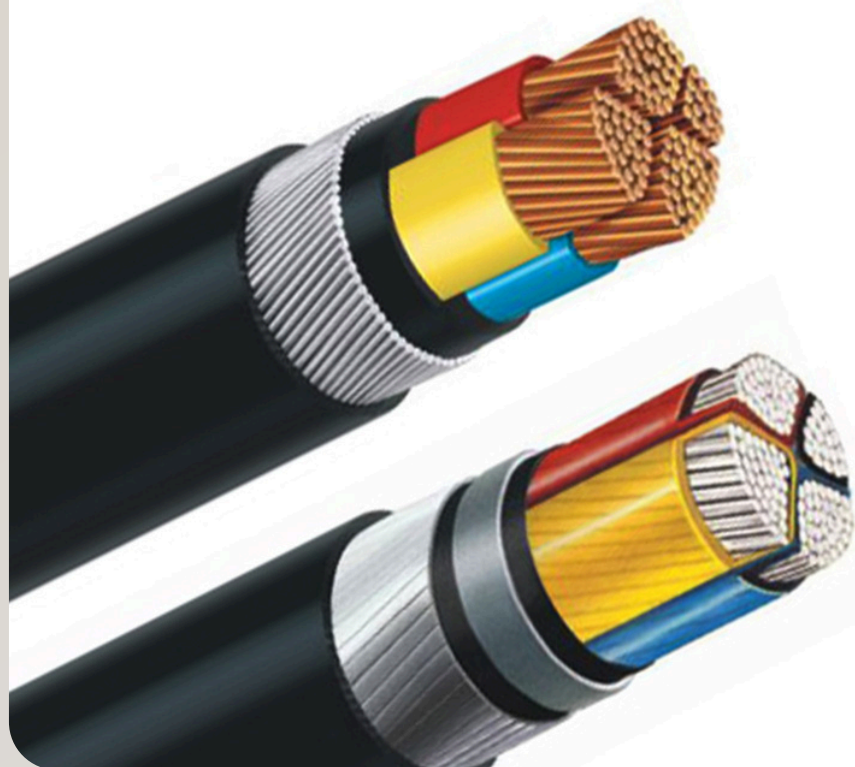
We recognize that each project comes with unique challenges and requirements. At EKYINE, we prioritize understanding and fulfilling client specifications with precision and care. Our dedicated team collaborates closely with you to comprehend your specific needs and deliver tailored solutions that align perfectly with your project objectives. Whether it's custom equipment configurations or specialized material requirements, EKYINE is committed to exceeding your expectations through meticulous attention to detail and unwavering commitment to quality.

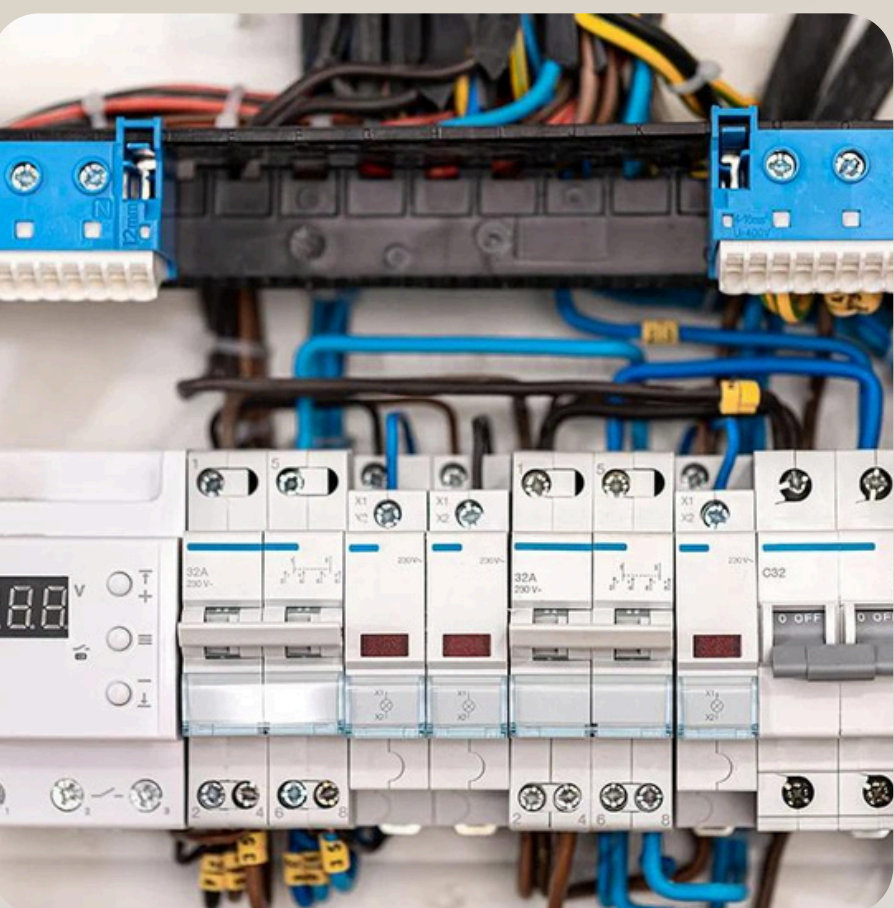
*As we continue to innovate and expand our offerings, these principles remain steadfast, guiding us towards achieving excellence and ensuring that EKYINE remains your trusted partner in equipment, tools, and materials supply.*

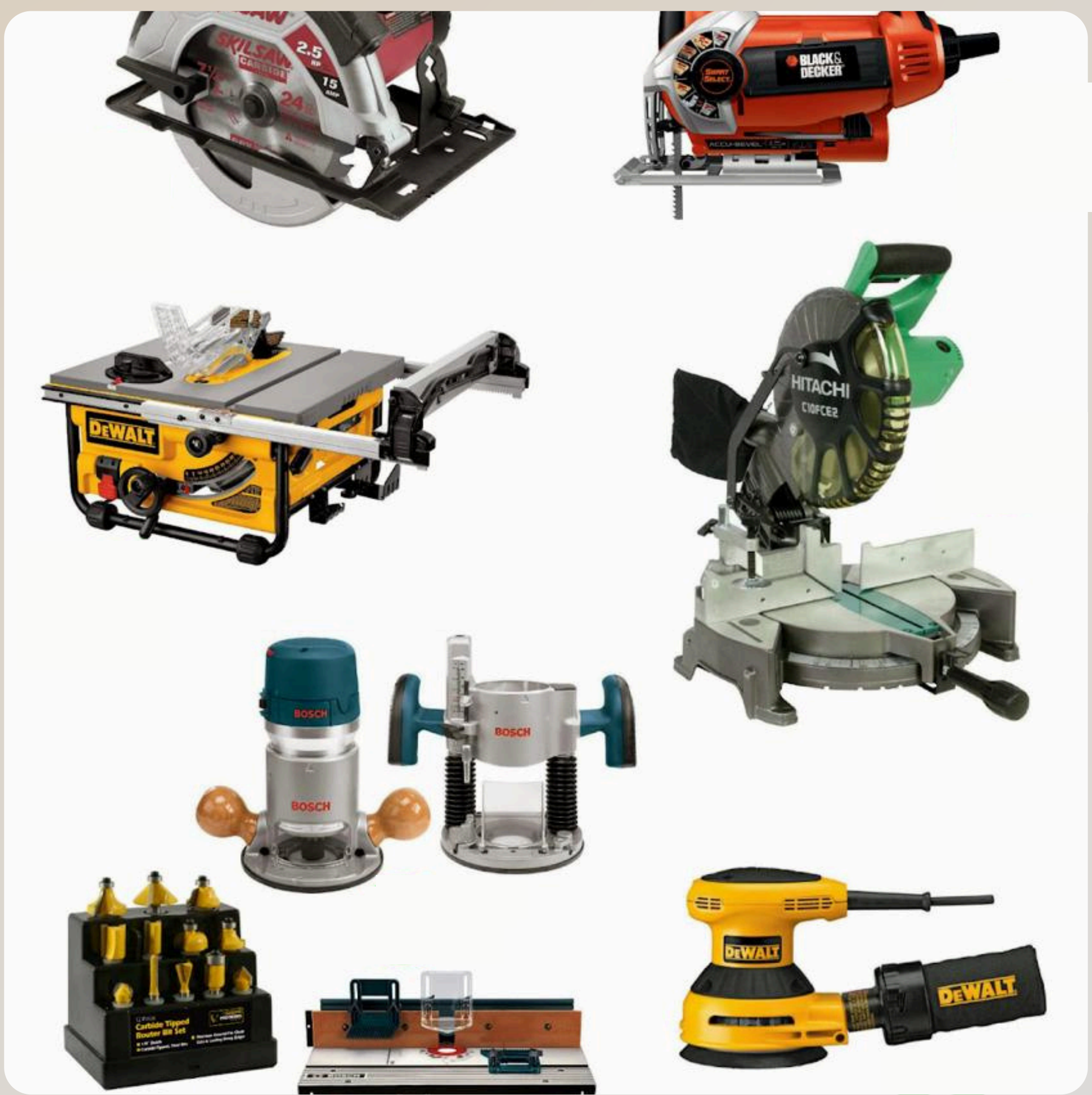
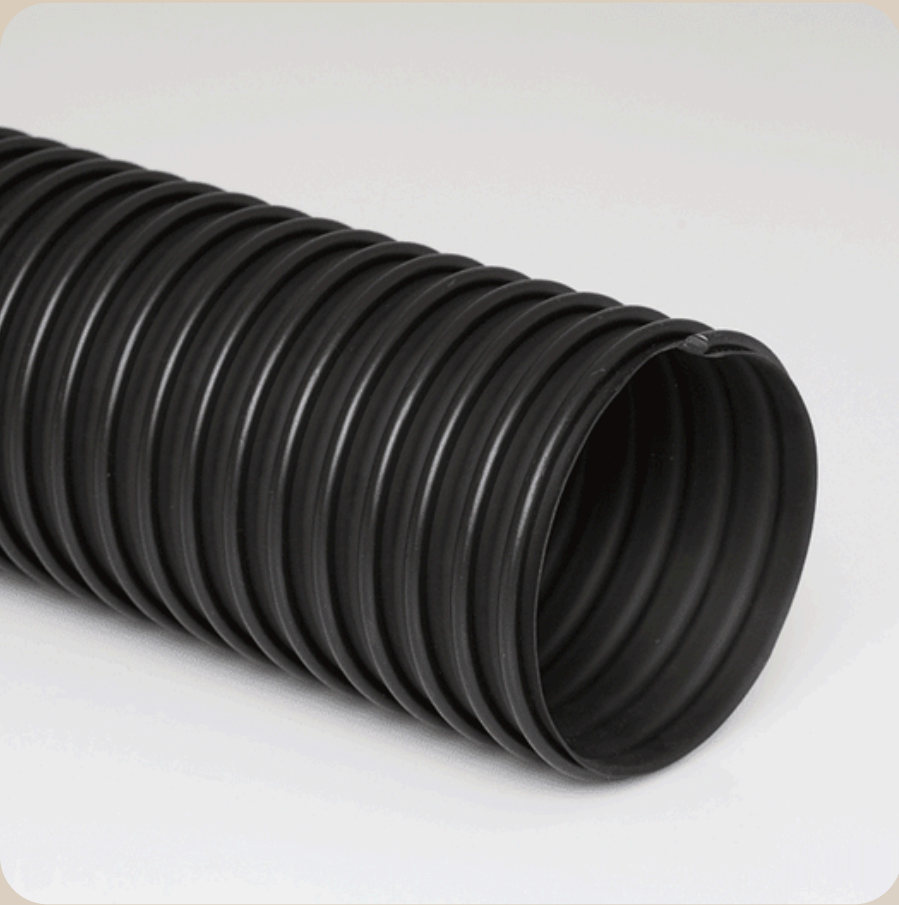
## ELECTRICALS

*Our electrical products include:*

- 3 x 1.5 mm Cable
- 3 x 2.5 mm Cable
- Cutting Disk
- PVC Pipe (1/2 inch)
- Flex Tube (32 mm)
- 1.5 mm Cable
- 2.5 mm Cable
- 4 mm Cable
- 6 mm Cable
- 2.5 x 3 Cable
- 16 mm Earth Cable
- 1.5 mm x 3 Cable
- 4 x 16 mm Armoured Cable
- Flood Light
- Cat 6 Cable
- 3 x 4 Cable Flex (105 metres)
- 5 x 4 Cable Flex (105 metres)
- 50 mm Flex Tube
- Strip Light
- Strip Adapter
- 12 Volt Transformer
- 8 x 8 Junction Box
- Speaker Cable (60 metres)
- Electrical Tape
- Circuit Breakers
- Switches and Sockets
- Cable Trays and Management Systems
- Voltage Regulators
- Conduit Pipes and Fittings
- Cable Glands and Connectors
- Surge Protectors
- Electric Motors
- Electrical Testers and Meters
- Emergency Lighting Systems
- Power Distribution Units (PDU)
- Generator Sets
- Solar Panels and Accessories
- LED Bulbs and Lamps
- Heating Elements and Thermostats
- Control Panels and Enclosures
- Fire Alarm Systems
- Access Control Systems
- CCTV Cameras and Surveillance Equipment
- **AND MANY MORE**









## MASONRY

*Our masonry products include:*

- 1/4" (6mm)
- 3/8" (7.5mm)
- 8mm (30ft)
- 10mm Ordinary
- 11.5mm (30ft)
- 12mm Ordinary
- 12mm (STD)
- 5/8" (14mm)
- 16mm Ordinary
- 16mm (STD)
- 20mm
- 8mm (40ft) High Tensile
- 10mm (40ft) High Tensile
- 12mm (40ft) High Tensile
- 16mm (40ft) High Tensile
- 20mm (40ft) High Tensile
- 25mm (40ft) High Tensile
- 32mm (40ft) High Tensile
- 12mm (40ft) High Tensile (Foreign)
- 16mm (40ft) High Tensile (Foreign)
- 20mm (40ft) High Tensile (Foreign)
- Binding Wire
- Binding Wire (Foreign)
- Nails 1" - 1½"
- Nails 2" - 5"
- Concrete Nails 2", 2½", 3", 4"
- DIAMOND
- DIAMOND (DURABOND) 32.5N
- GHACEM (SUPERCool) 32.5N
- GHACEM 32.5R
- GHACEM 42.5R
- DANGOTE
- CIMAF 42.5RB
- SUPACEM (SUPASTAR) 32.5N
- SUPACEM 42.5R
- DZATA CEMENT 42.5R
- PERMAFIX GROUT - WHITE
- PERMAFIX GROUT - GREY
- PERMAFIX TILE CEMENT
- **AND MANY MORE**





## CARPENTRY

*Our carpentry products include:*

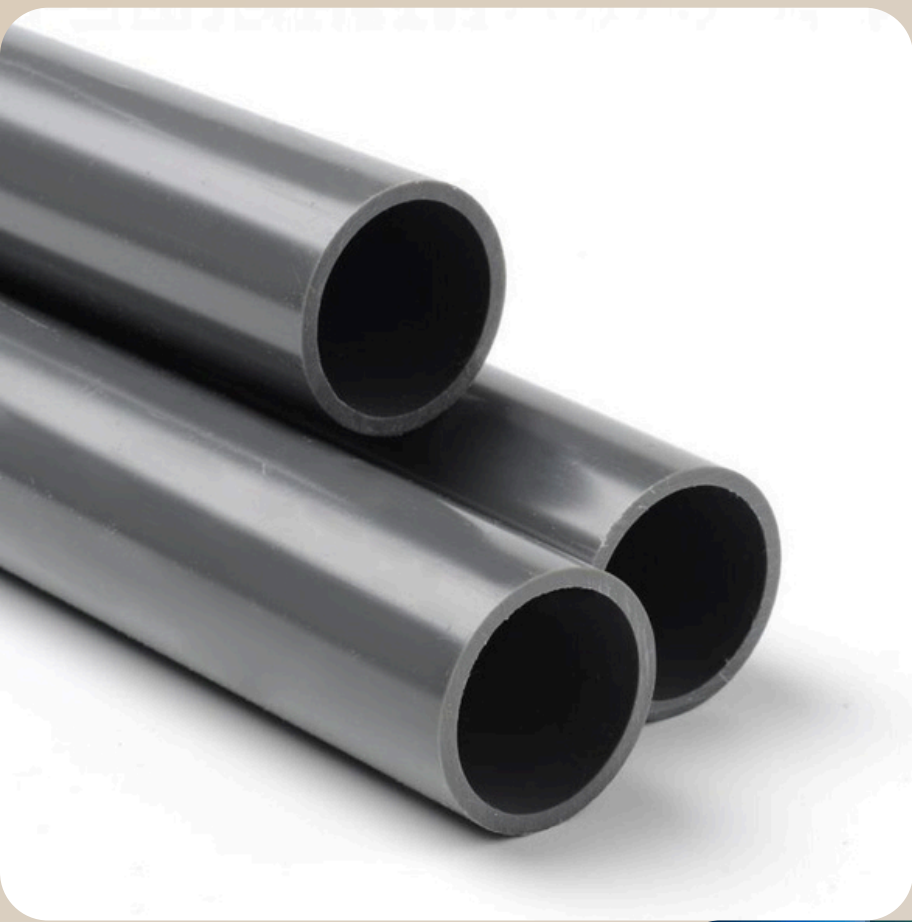
- Wawa Board
- 4 Common Nail
- 4 Concrete Nail
- 3 Common Nail
- 3 Concrete Nail
- 2 x 3 Wood
- Caution Tape
- 1 x 12 Wood
- 2 x 2 (Water Pool)
- 2 x 16 (Water Pool)
- Marine Plywood
- 2 x 4 Wood
- 2 x 2 Wood
- 2" Nails
- Bamboo
- Sikalite Waterproof Admixture
- Anchofix Gun
- Fibre Mesh
- Chicken Mesh
- Felt Nails
- Hand Saw
- Circular Saw
- Jigsaw
- Router
- Planer
- Chisel Set
- Mallet
- Wood Clamps
- Carpenter's Square
- Level
- Tape Measure
- Nail Gun
- Screwdriver Set
- Wood Glue
- Sandpaper (Various Grits)
- Wood Stain and Finish
- Wood Screws
- Wood Dowels
- Corner Braces
- Wood Filler
- Carpenter Pencil
- **AND MANY MORE**

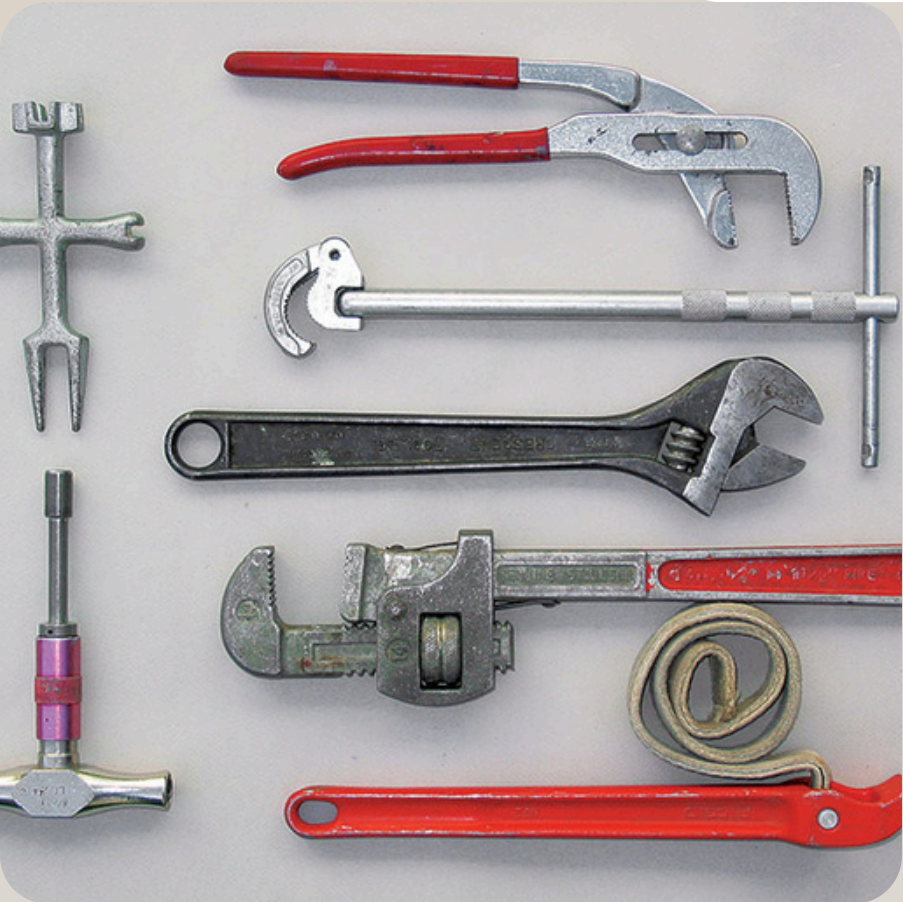


## PLUMBING

*Our plumbing products include:*

- 1/2 PPR Pipe
- 1/2 PPR Bend
- 1/2 PPR Tee
- 1/2 PPR Crossover
- 1/2 Valve Socket (PPR)
- 1/2 Chrome Stopcork (SYR)
- 1/2 Faucet Bend (PPR)
- 1/2 Coupling (PPR)
- 1/2 Thread Plug
- 3/4 Pipe (PPR)
- 3/4 Bend (PPR)
- 3/4 x 1/2 Reducer (PPR)
- Thread Tape
- 3/4 End Cup (PPR)
- 1 X 3/4 Reducer
- 1 1/4 Pipe
- 2 1/4 Bushing
- 1 1/4 End Cup
- "3" Y Branch"
- 1 PPR Pipe
- 1 PPR Bend
- 1 PPR Tee
- 3 x 1/2 Reducer (PPR)
- "1" PPR End Cup"
- 1 K - 55
- 4 x 45 Elbow
- "4" - Y Branch"
- "4" Clean Out"
- 4 x 3 Bushing
- 3 x 2 Bushing
- 2 x 45 Elbow
- "6" S-Tee"
- 6 x 4 Bushing
- "3" S-Tee"
- 3 x 45 Elbow
- "3" Clean Out"
- 4 x 6 Bushing
- "1" Coupling (PPR)"
- 3/4 Faucet Bend
- "2" Pipe"
- 2 x 4 Bushing
- "1" Pipe (PPR)"
- 3/4 Tee (PPR)
- "6" Pipe"
- 3 x 1/2 Reducer (PPR)
- 3/4 Pipe(PPR)
- 1 1/2 Bend
- "1 1/2" Pipe (1/2 length)"
- Angle valve (SYR) - 1/2
- Flexible Tube F/F (SYR)
- Thread tape (SYR)
- Silicon (GP)
- "4" Pressure Pipe"
- "4" Bend"
- "4" End Cup"
- "4" Swerve Tee"
- "3" Pressure pipe"
- "3" Bend"
- "3" Swerve Tee"
- 3 x 2 Bushing
- "3" End Cup"
- "2" Pressure Pipe"
- "2" Bend"
- "2" Swerve Tee"
- "2" End Cup"
- 2 x 45° Bend
- "2" Y Branch"
- SL 100 Glue
- "2" Pressure Pipe"
- "3" Pressure Pipe"
- "4" Pressure Pipe"
- 3 x 3 Conduit Boxes
- 3 x 6 Conduit Boxes
- 20mm PVC Pipe
- **AND MANY MORE**







## PAINTING

*Our painting products include:*

- Putty - Acrylic
- Damp-Proof Epoxy (Black)
- Damp-Proof Epoxy Thinner
- AB Sandpaper Roll - G. 180
- Thinner
- Acrylic PVA - B7(10YY 46/041)
- Ecosure Plaster Primer
- Acrylic PVA (BRILLIANT WHITE)
- AB Masking Tape
- Texture - Acrylic Paint
- Texture - Rustic
- Putty - Acrylic
- Weathershield
- Acrylic Filler
- Angle Perforators
- Drop Cloths
- Paint Sprayer
- Paint Mixer
- Painter's Tape
- Caulk
- Caulking Gun
- Putty Knife
- Paint Edger
- Paint Trimmer
- Sponges
- Sander
- Dust Mask
- Safety Glasses
- Paint Buckets
- Stir Sticks
- Ladder
- Mineral Spirits
- Latex Gloves
- Respirator Mask
- Utility Knife
- Wire Brush
- Paint Remover
- Wallpaper Scraper
- Paint Conditioner
- Paint Extender
- Paint Roller Covers (various nap sizes)
- Paint Roller Frames
- **AND MANY MORE**





## **WE'VE GOT YOU COVERED!**

Our dedication to comprehensive service extends across diverse industries, ensuring that your specific needs are met with expertise and tailored solutions that support your vision goals and operational targets.

### *Construction and Infrastructure*

For the construction and infrastructure sectors, EKYINE offers a wide array of equipment, tools, and materials essential for building projects of all scales. Whether you're constructing residential developments, commercial complexes, or infrastructure upgrades, our unmatched equipment, advanced tools, and quality materials ensure optimal performance and durability.

### *Manufacturing and Industrial*

In manufacturing and industrial environments, precision and efficiency are paramount. EKYINE delivers advanced tools and industrial supplies that streamline production processes and enhance operational efficiency. From specialized machinery to high-performance tools, we equip your facility with the tools needed to maintain a competitive edge.

### *Hospitality*

In the hospitality sector, guest satisfaction and operational excellence go hand in hand. EKYINE provides essential supplies and equipment that meet the stringent demands of these sectors. From high-quality appliances and furnishings to maintenance tools, we support your efforts in delivering memorable experiences.

### *Technology and Innovation*

Technology-driven sectors rely on cutting-edge tools and materials to stay ahead. EKYINE supplies advanced technology tools and materials that empower innovation across various fields. Whether it's IT infrastructure, telecommunications, or research and development, our solutions enable technological advancement and operational efficiency.

### *Retail and Commercial Services*

Retail and commercial sectors require reliable equipment and supplies to ensure smooth operations and customer satisfaction. EKYINE offers a comprehensive range of products tailored to meet the unique needs of retail environments, from display fixtures to maintenance tools, enhancing the shopping experience and operational efficiency.

### *Environmental and Agricultural*

We supply tools and materials that promote sustainable practices and efficient agricultural operations. From environmental monitoring equipment to agricultural machinery, we support efforts to preserve natural resources and enhance agricultural productivity.

### *Education*

Educational institutions rely on dependable tools and supplies to fulfill their missions effectively. EKYINE offers educational resources, facility maintenance tools, and support supplies that contribute to a conducive learning environment.



## Stainless Steel 304 (Food Grade)

### Auto-retractable Water Hose Reel

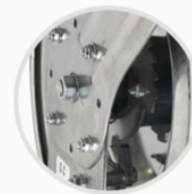
#### Hose Reel Features

- Industrial-grade Spring-Steel based auto-retraction mechanism
- 18-Gauge Stainless Steel Rust-Resistant Construction
- Stainless Steel Fasteners
- 12-Point ratchet for precise resolution
- Adjustable Outlet Arm
- 4-way Roller Guides
- Ceiling, Floor, Wall mounting options
- In-stock spare part programme
- 1-Year Warranty

Small & Large  
Size Models  
Now Available



Stainless  
Steel Construction



12-point Ratchet



Multiple Mounting Options  
Ceiling, Wall & Floor



### Kitchen Faucet - 8" Deck Mounted

#### Zephyr™

- Hot & Cold water mixer
- Deck mounted
- 8" Center, 2pcs. eccentric flange w/ adjustable center 196mm- 212mm
- Heavy duty BRASS construction, Zinc alloy Dual lever handles
- 9 9/16"(243mm) overall height
- S/S Swing Spout 12"(305mm)

Finish Polished Chrome  
SKU ZPRFD-F2



### Kitchen Faucet - Wall Mounted Retractable Pot Filler

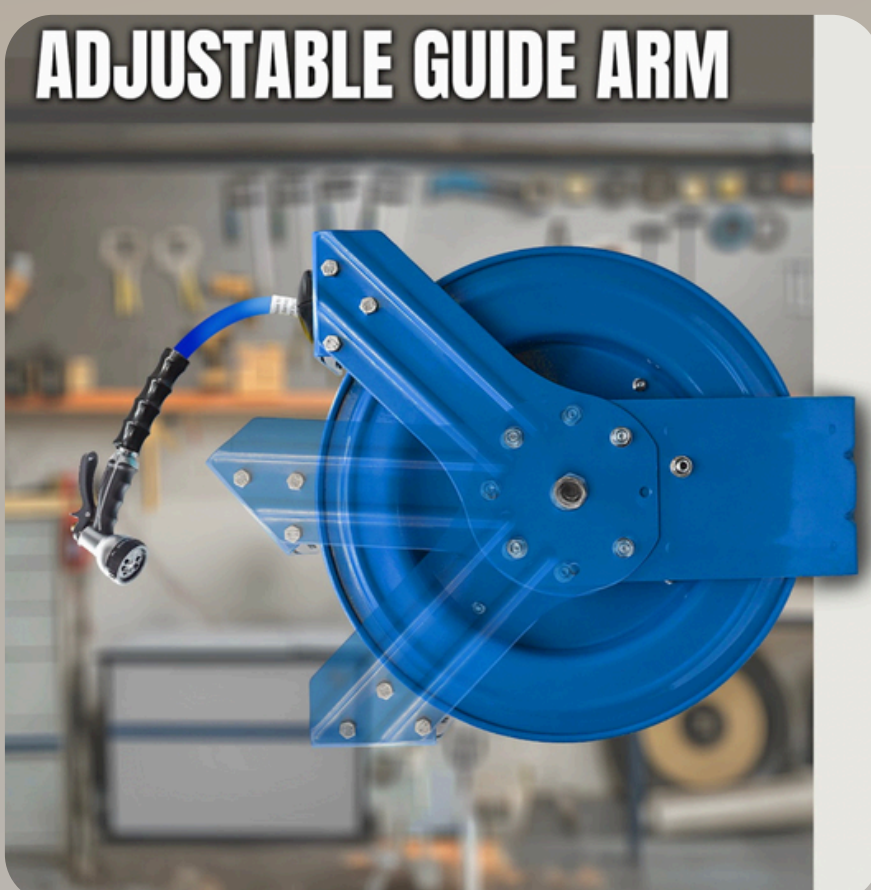
#### Zephyr™

- Wall Mount Pot Filler Faucet, Cold water supply
- Double Joint Nozzle, Back (310mm), Front (155mm)
- Body Material: Brass
- Nozzle Material: Stainless steel
- Inlet thread size: G1/2"
- Lever type: Control grip on the tip of the Nozzle

Finish Polished Chrome  
SKU ZPRFW-F2



NEW  
LAUNCH



### Pre-Rinse Faucet - Deck Mounted

#### Zephyr™

- Hot & Cold water mixer
- Deck mounted, Single hole
- Brass compression cartridge w/ spring check valve
- Heavy duty BRASS construction, Zinc alloy Dual lever handles
- 47 1/8"(1120mm) overall height
- 20"(508mm) S/S riser, 12"(305mm) S/S wall bracket
- 37"(940mm) S/S flexible hose
- Food grade UPGRADE Spray Valve with laser logo "Zephyr", male thread 7/8"-20NPT
- Brass add-on body, S/S Swing Spout reach 12"(305mm)
- Comes with 2pcs 600mm water inlet hose

Finish Polished Chrome, Black  
SKU ZPRFD1



### Pre-Rinse Faucet - Deck Mounted (U-Inlet)

#### Zephyr™

- Hot & Cold water mixer
- Deck mounted, Single hole
- U-Inlet: 4"(102mm) centers, 1/4" -18NPT male thread
- Brass compression cartridge w/ spring check valve
- Heavy duty BRASS construction, Zinc alloy Dual lever handles
- 47 1/8"(1120mm) overall height
- 20"(508mm) S/S riser, 12"(305mm) S/S wall bracket
- 37"(940mm) S/S flexible hose
- Food grade UPGRADE Spray Valve with laser logo "Zephyr", male thread 7/8"-20NPT
- Brass add-on body, S/S Swing Spout 12"(305mm)

Finish Polished Chrome, Black  
SKU ZPRFD2



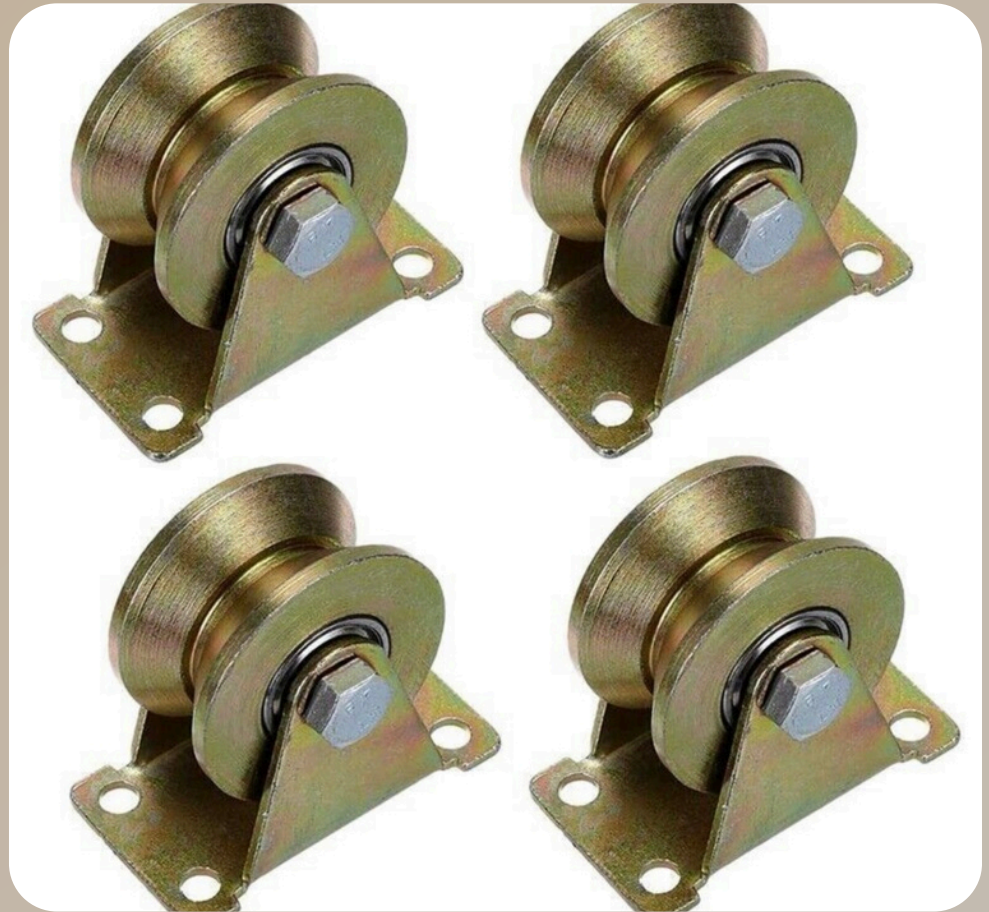
# Fire extinguishers



## Top sliding rollers

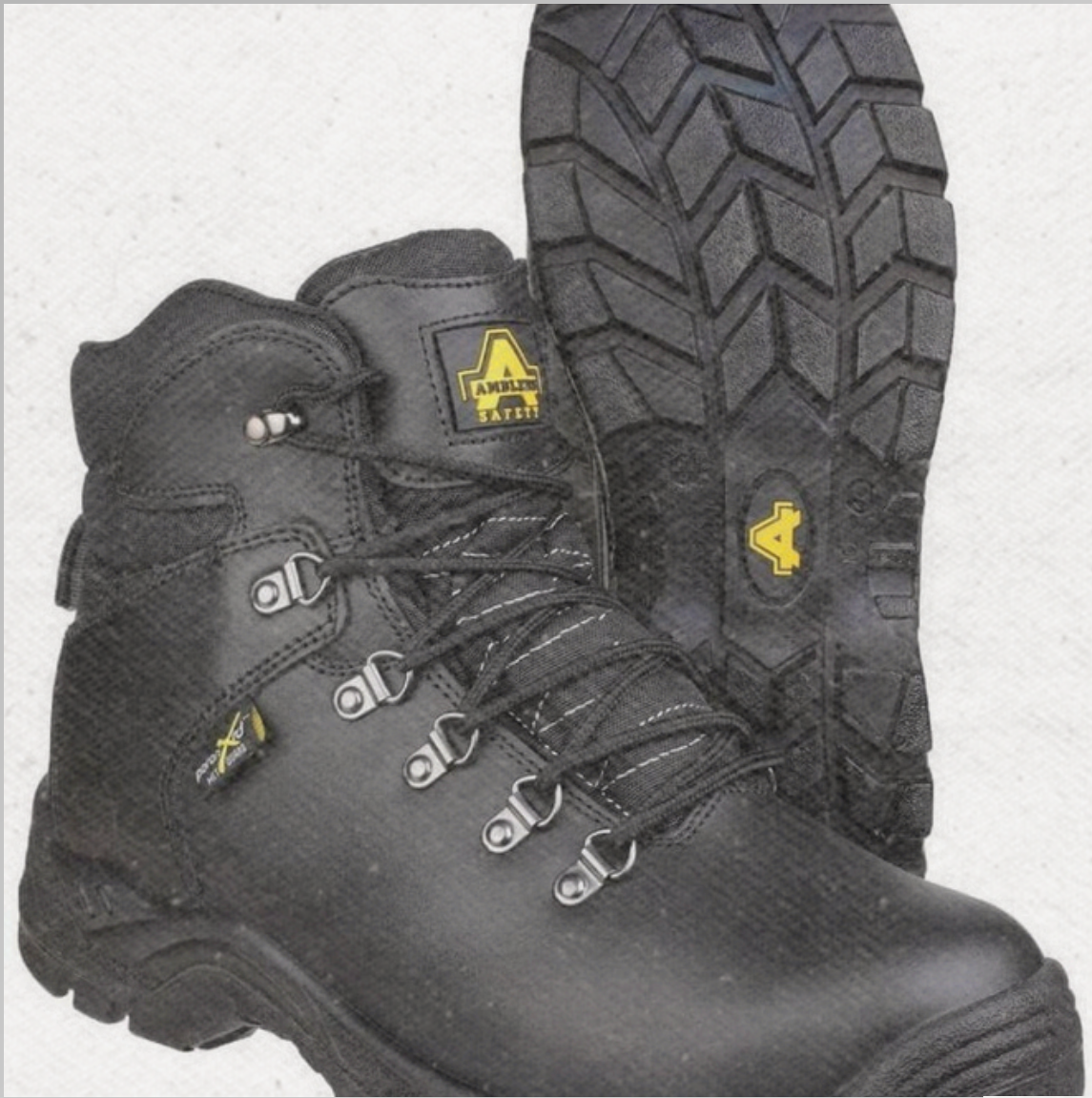


## Steel sliding gate wheels













## **CHOOSE EKYINE!**

Our commitment to quality ensures that all our products meet the highest standards. We meticulously select and test our materials to guarantee durability and performance.

We tailor our services to meet your specific needs, providing personalized solutions and attentive service to ensure your satisfaction.

Our team of professionals brings a wealth of expertise and dedication to every project. We offer guidance and support to help you achieve your goals efficiently.

With a wide-reaching network, EKYINE serves a diverse range of industries across various regions. Our global presence makes us a trusted partner in the international market.

For large-scale projects, EKYINE is your dependable partner. We ensure timely delivery and exceptional service, helping you complete your projects on schedule and to the highest standards.

## **CONTACT US**

Phone:

+233 54 621 0624

+233 50 691 8887

+233 50 408 2952

E-mail:

[ekyineenterprise2023@gmail.com](mailto:ekyineenterprise2023@gmail.com)

Address:

Derby Avenue Link, St. 1

Accra Central

## **FOLLOW US**

Instagram: [Ekyine\\_Ltd](#)



Email:  
[ekyineenterprise2023@gmail.com](mailto:ekyineenterprise2023@gmail.com)

Phone:  
+233 54 621 0624  
+233 50 691 8887  
+233 50 408 2952

instagram:  
[Ekyine\\_Ltd](#)